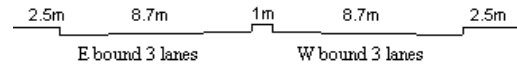
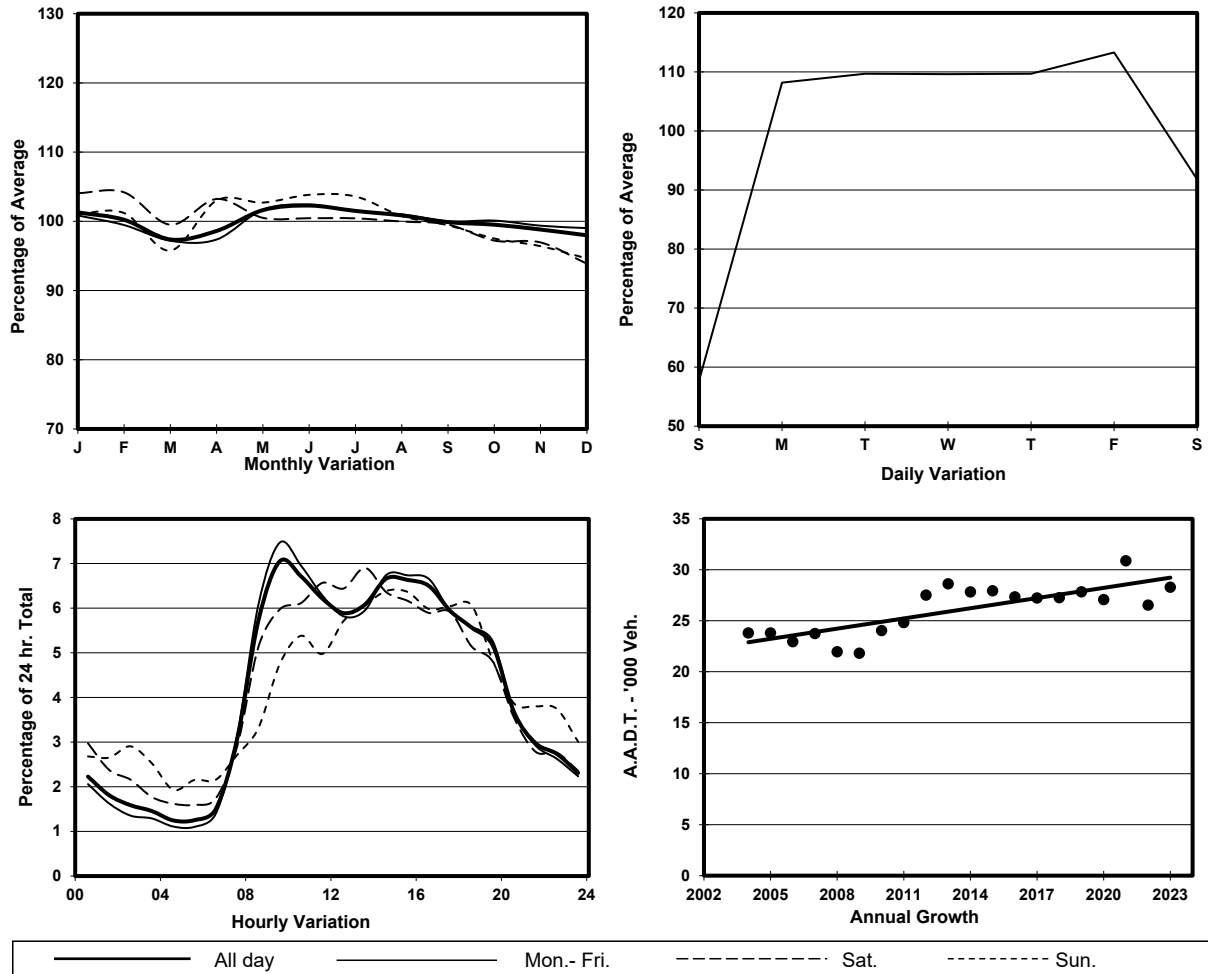


YEAR 2023 LINK WAI YIP ST (from LAI YIP ST to HOI YUEN RD)

CORE STATION 3020
ROAD NETWORK MAJOR
ROAD TYPE DISTRICT DISTRIBUTOR



1. TRAFFIC FLOW VARIATION AND GROWTH



2. TRAFFIC CHARACTERISTICS (BY DIRECTION)

Parameter	All - Day	Mon. - Fri.	Sat.	Sun.
EAST BOUND				
A.A.D.T.	18700	21090	17840	10830
R 12 / 24 - %	73.2	74.1	72.3	66.6
R 16 / 24 - %	87.8	88.4	86.2	83.9
AM Peak Hour	0900-1000	0900-1000	0900-1000	0900-1000
One-way flow at AM peak hour	1400	1670	1120	550
T - % (AM)	-	-	-	-
PM Peak Hour	1600-1700	1600-1700	1600-1700	1800-1900
One-way flow at PM peak hour	1200	1380	1090	690
T - % (PM)	-	-	-	-
Prop.of commercial vehicles - 16 hr.	-	-	-	-
WEST BOUND				
A.A.D.T.	9590	10830	8730	5920
R 12 / 24 - %	69.8	71.9	63.9	58.5
R 16 / 24 - %	84.3	86.6	77.8	72.8
AM Peak Hour	0900-1000	0900-1000	0900-1000	0900-1000
One-way flow at AM peak hour	600	720	470	250
T - % (AM)	-	-	-	-
PM Peak Hour	1700-1800	1700-1800	1700-1800	1600-1700
One-way flow at PM peak hour	660	770	510	370
T - % (PM)	-	-	-	-
Prop.of commercial vehicles - 16 hr.	-	-	-	-

3. OTHER INFORMATION AND COMMENT